



Differential pressure | Air flow | Temperature | Humidity | Air quality

Sensing technology for ventilation and air-conditioning



Smart in sensing

At home all over the world

WIKA – your partner for ventilation and air-conditioning

WIKA offers you a wide range of measurement solutions for the instrumentation of your ventilation and air-conditioning systems. It includes mechanical and electronic instruments for monitoring pressure, air flow, temperature, humidity and air quality. All products meet the highest demands due to their distinctive measurement and processing quality. Comprehensive support over the entire product life cycle completes the offering.

The WIKA Group has 43 subsidiaries and more than 11,200 employees worldwide. State-of-the-art production facilities and experienced service teams offer the highest quality and reliability.

All instrument manufacturing processes are combined under one roof, from development, toolmaking and material testing to production and calibration. Extensive testing in our own laboratories ensures product quality. This enables short and highly flexible development and production cycles, both for series products and for customer-specific solutions.



On the road to climate neutrality

Precise measurement data increases building performance

Around 40 percent of the global final-energy requirement is used in buildings. Many air-conditioning and ventilation systems in public and commercial buildings are not optimally adjusted, contain outdated components or are oversized and are responsible for up to 50 % of energy costs.

In order to save energy, buildings today are almost hermetically sealed. The air quality can quickly reach values that impair the well-being and performance of people and can even lead to health problems in the long term.

Precise measurement data creates the basis for both energy and cost-efficient control of the ventilation and air-conditioning systems and, in this way, ensures a healthy indoor climate and satisfied building users.

The smart sensing portfolio from WIKA ensures continuous and precise recording of pressure, temperature, humidity and air quality. Analogue and digital signal transmissions as well as LoRaWAN® radio solutions enable problem-free integration into any automation and control system as well as into cloud environments. In this way, you can also make existing systems fit for the future with retrofit solutions.



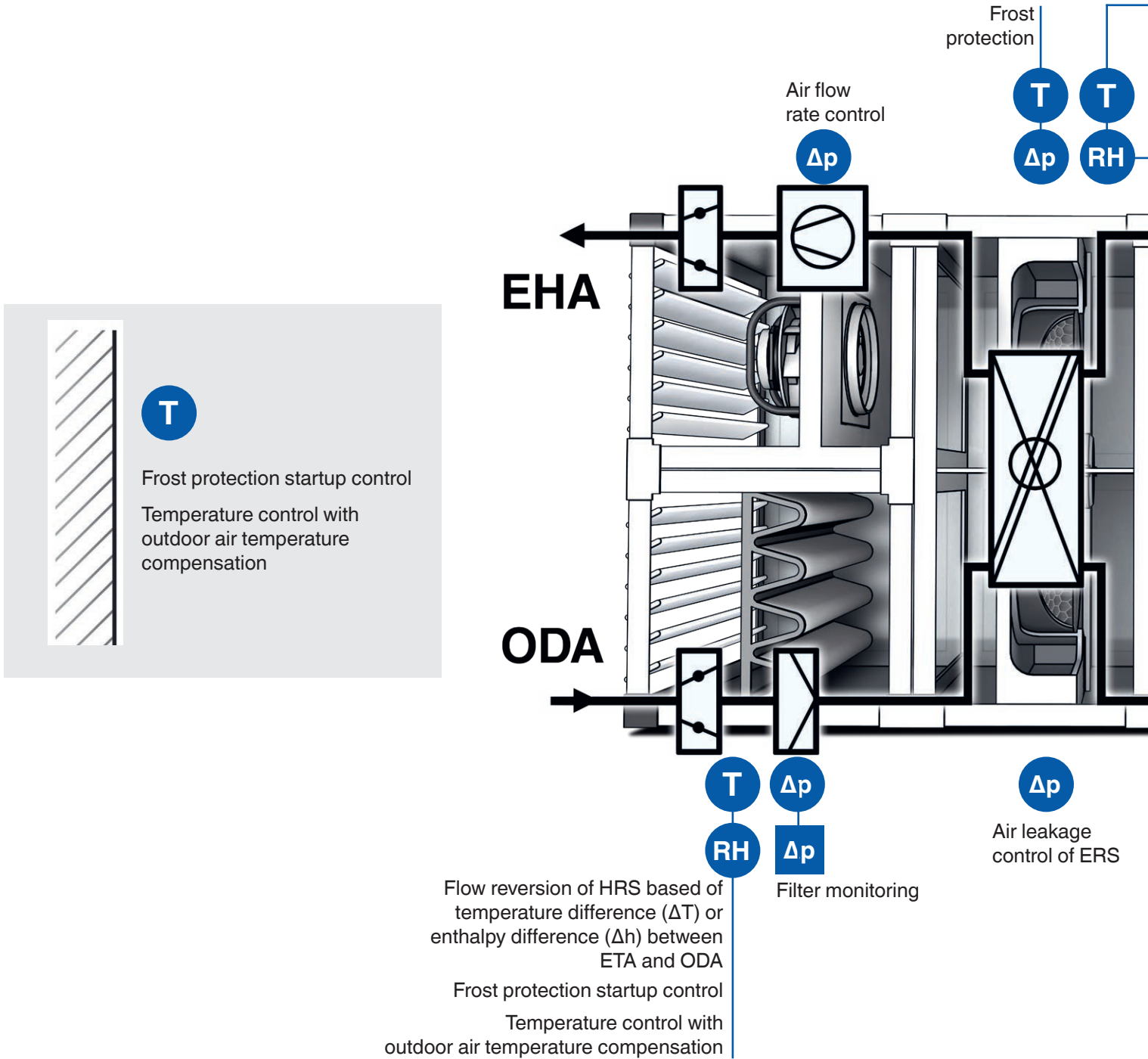
"We want to provide our customers with the highest level of quality, which is why we have been working in partnership with WIKA for many years. They offer us comprehensive technological competence and are a reliable, experienced and innovative partner. The long-term security of supply, the ability to identify customer-specific solutions and also the excellent service are important for us."



Tobias Meyer CEO, Owner VR/GL, Seven-Air Gebr. Meyer AG, Switzerland

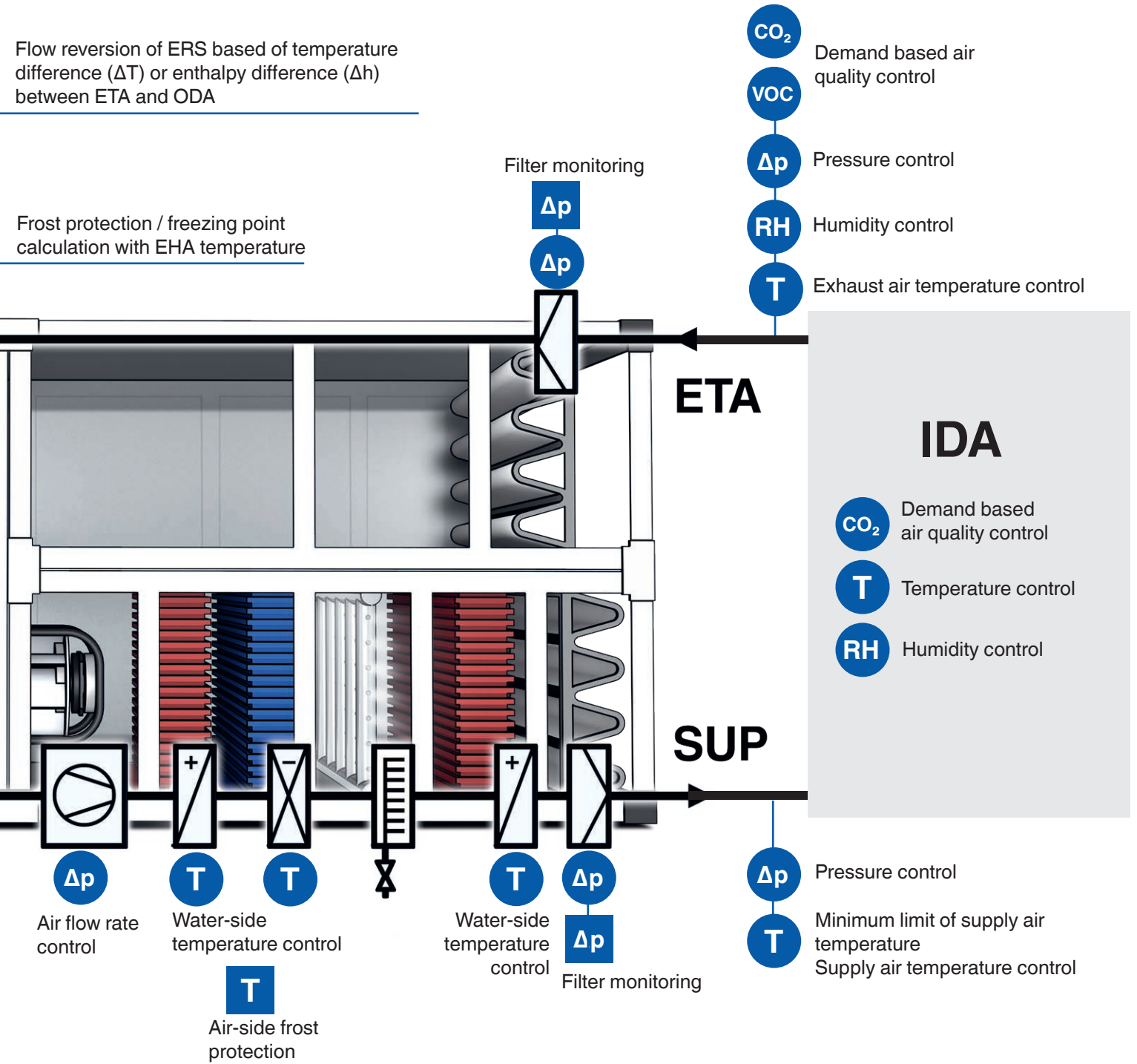
Smart sensor portfolio

Energy- and cost-efficient automation and control of air-handling units



Flow reversion of ERS based of temperature difference (ΔT) or enthalpy difference (Δh) between ETA and ODA

Frost protection / freezing point calculation with EHA temperature



Future-proof solution

Modular, wireless, highly precise

Convenient commissioning

The differential pressure sensors A2G-500, A2G-520 and A2G-540 can be parameterised via NFC using the WIKA app. Intuitive menu navigation simplifies and shortens commissioning significantly. The parameters of one instrument can also be transferred directly to another instrument.



Documentation without gaps

Measured values and instrument data can be displayed and read out via NFC and the WIKA app. This enables rapid and complete documentation of all processes.

Integration as required

The sensors transmit their measured values via an analogue and digital signal (MODBUS®), as well as via radio (LoRaWAN®). They can therefore be integrated directly into all automation and control systems as well as into cloud solutions.

Low cabling effort

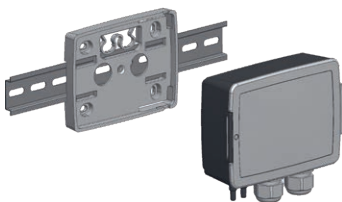
A decentralised data node for external signal conversion into MODBUS® with up to 4 input signals reduces the cabling effort and thus also installation costs.

Wireless for retrofit projects

As battery-operated LPWAN instruments, the sensors offer a high level of flexibility. Since they do not require any wiring, they are also an ideal solution for retrofit projects.

Time-saving mounting

The removable mounting plate/drilling template ensures simple, time-saving mounting on the air-handling system or directly on a DIN rail in the control cabinet.



Suitable for outdoor use

Perfect balance between compact design and easy installation. There is plenty of space in the housing, which facilitates cabling. Toolless opening thanks to snap-on cover.

Individual design

The graphics of the cover sheet insert can be customised. The instruments can thus be optimally integrated into any system design.



Optimally readable display

The local display shows up to 4 measured values and 2 relay states. The information can be clearly read from any viewing direction thanks to the 2" TFT colour display with traffic light function and alphanumeric labelling of the measurement parameters.

| | |
|--------------------------------|---|
| SUP FILTER 225 Pa | SUP FAN 6285 m ³ /h |
| SUP Temp 19.1 °C | R1: closed R2: open |

Immediate error detection

The traffic light function of the display enables unambiguous recognition of critical system statuses at a glance.

| | | |
|-------------------------------|--------------------------------|--------------------------------|
| ODA FILTER 88 Pa | ODA FILTER 151 Pa | ODA FILTER 174 Pa |
|-------------------------------|--------------------------------|--------------------------------|



Cost-saving function expansion

In a version with 1 or 2 additional relay outputs, the A2G-500 can also be used as a differential pressure switch or 2-point controller – a cost-saving functional expansion.

Integrated air flow calculation

The sensor models A2G-520 and A2G-540 have an integrated air flow calculation based on all common formulae.

Inexpensive differential pressure and air flow controller

The integrated PID controller of the A2G-540 enables cost-effective control of ventilation systems, frequency converters or damper drives with little effort.

Highest measurement accuracy

With long-term stability and temperature-compensation, as well as a 2-point adjustment of the output signal, the piezoresistive measuring element ensures the highest measurement accuracy. An optional automatic zero point setting makes the sensors maintenance-free.

Reduced stockholding costs

The fact that the measuring ranges of the sensors are freely adjustable reduces the variety of items and thus ensures low stockholding costs.

High performance in every environment

Modular structure, individual design, time-saving mounting

Individual design

The dials, scales and segments of the differential pressure gauges from the A2G product family can be customised graphically. The instruments can thus be optimally integrated into any system design.



Flexible process connection

The pressure gauges are available with the usual connections: with a straight or angled threaded pressure connection made of plastic or brass and with a mounting thread for a pipe connection.

Small insertion depth

The model A2G-05 has a small insertion depth. It is therefore ideal for recessed installation in doors, housing panels and walls.



Time-saving, tool-free mounting

The instruments with a threaded bezel can be fitted to wall thicknesses of 2 ... 50 mm without tools, thus saving time.

Minimal space requirement

With a diameter of just 63 mm, the A2G-mini fits into tight installation situations. Its display is easy to read, despite its small size.





Easy alignment and adjustment

All differential pressure gauges (except model A2G-mini) can be aligned ± 15 degrees during mounting and the zero point can be adjusted with a screwdriver.

Functional limit setting

A limit value can be easily set with the red mark pointer.

Electrical output signal

The A2G-15 instrument version features an electrical output signal. 0 ... 10 V or 4 ... 20 mA (2-wire) are available.

Precise measuring results

The optimal coordination of measuring system and diaphragm guarantees a precise measurement.

Flexible mounting variants

The models A2G-10, A2G-15 and A2G-mini are also available in an add-on version.

Silicone-free version

Depending on the instrument model, silicone-free versions are available e.g. for use in the spray painting industry.



Pressure



| | Differential pressure gauge Eco | Differential pressure gauge | Differential pressure gauge with electrical output signal | Differential pressure gauge, nominal size 63 | Differential pressure gauge with pressure switch |
|---|--|---|--|--|--|
| Model | A2G-05 | A2G-10 | A2G-15 | A2G-mini | A2G-90 |
| Application | <ul style="list-style-type: none"> ■ Differential pressure monitoring for filters ■ Overpressure monitoring for clean rooms and also under- and overpressure monitoring for laboratories and operating rooms | <ul style="list-style-type: none"> ■ Differential pressure monitoring for filters ■ Overpressure monitoring for clean rooms and also under- and overpressure monitoring for laboratories and operating rooms | <p>Analogue display and monitoring of differential pressures with electrical measured value transmission, combined in a single instrument</p> | <ul style="list-style-type: none"> ■ Analogue display and monitoring of differential pressures with minimal space requirements ■ For compact ventilation units and applications in the painting industry | <ul style="list-style-type: none"> ■ Analogue display and monitoring of differential pressures ■ Switching output can be used directly for plant control |
| Mounting | <ul style="list-style-type: none"> ■ Simple and fast mounting ■ Integrated sealing element for direct installation in a ventilation duct ■ Very small insertion depth (42 mm), therefore ideally suited for recessed installation in doors, case panels and walls | <ul style="list-style-type: none"> ■ Tool-free installation when using the built-in version ■ Integrated sealing element for direct installation in a ventilation duct or instrument panel ■ Built-in or add-on version | <ul style="list-style-type: none"> ■ Built-in or add-on version ■ Simple and fast mounting ■ Tool-free installation when using the built-in version ■ Integrated sealing element for direct installation in a ventilation duct | <ul style="list-style-type: none"> ■ Built-in or add-on version ■ Simple and fast mounting | <p>Quick and easy mounting, as both instruments (differential pressure switch and differential pressure gauge) are preassembled in the add-on case and already connected internally to the process connection</p> |
| Process connection | Fixed back mount process connection in angular form for hoses of Ø 4 ... 6 mm | G 1/4" female thread for threaded pressure connections, straight or in angled form for Ø 4 ... 6 mm hoses | G 1/4" female thread for threaded pressure connections, straight or in angled form for Ø 4 ... 6 mm hoses | Fixed, straight process connection for Ø 4 ... 6 mm hoses | G 1/4" female thread for brass threaded pressure connections, straight for Ø 4 ... 7 mm hoses |
| Electrical output signal / Switch contacts | | | <ul style="list-style-type: none"> ■ DC 0 ... 10 V (3-wire) ■ 4 ... 20 mA (2-wire) | | <ul style="list-style-type: none"> ■ Alternating current: AC 250 V, 3 A ■ Direct current: DC 30 V, 3 A ■ Single pole double throw (SPDT) |
| Special features | <ul style="list-style-type: none"> ■ Maximum operating pressure 20 kPa ■ Also available as a silicone-free version ■ Separated construction of measuring chamber and display area ■ Individual design of dial and scale | <ul style="list-style-type: none"> ■ Maximum operating pressure 20 kPa ■ Also available as a silicone-free version ■ Separated construction of measuring chamber and display area ■ Individual design of dial and scale | <ul style="list-style-type: none"> ■ Electrical output signal 4 ... 20 mA (2-wire) or 0 ... 10 V (3-wire) ■ Maximum operating pressure 20 kPa ■ Separated construction of measuring chamber and display area ■ Individual design of dial and scale | <ul style="list-style-type: none"> ■ Optimal readability with minimal space requirements ■ All-metal design (built-in version) ■ Silicone-free ■ Individual design of dial and scale | <ul style="list-style-type: none"> ■ Compact indicator and pressure switch fitted within a plastic case ■ Single-pin microswitch (change-over contact) ■ Switch point adjustable when installed ■ UV stabilised ■ Individual design of dial and scale |
| Measuring range | <ul style="list-style-type: none"> ■ 0 ... 50 Pa to 0 ... 6,000 Pa ■ -25 ... +25 Pa to -1,500 ... +1,500 Pa ■ further ± ranges on request | <ul style="list-style-type: none"> ■ 0 ... 50 Pa to 0 ... 6,000 Pa ■ -25 ... +25 Pa to -1,500 ... +1,500 Pa ■ further ± ranges on request | <ul style="list-style-type: none"> ■ 0 ... 50 Pa to 0 ... 6,000 Pa ■ -25 ... +25 Pa to -1,500 ... +1,500 Pa ■ further ± ranges on request | <ul style="list-style-type: none"> ■ 0 ... 250 Pa ■ 0 ... 500 Pa ■ 0 ... 750 Pa ■ 0 ... 1,000 Pa | <ul style="list-style-type: none"> ■ 0 ... 250 Pa to 0 ... 6,000 Pa |
| Ingress protection | IP54 (optional IP65) | IP54 (optional IP65) | IP54 (optional IP65) | IP68 | IP65 |



| Inclined tube manometer | Differential pressure switch | Dual differential pressure sensor | Measuring probe |
|--|--|---|---|
| A2G-30 | A2G-40 | A2G-52 | A2G-FM |
| Analogue display and monitoring of low differential pressures | For monitoring the differential pressure of air and other non-inflammable and non-aggressive gases | For measurement, monitoring and transmission of 2 differential pressures via Modbus. The function as a data node allows the integration of 2 additional, external measured values | <ul style="list-style-type: none"> ■ Measurement of air flows, air velocity and differential pressures in circular ventilation pipes and rectangular ventilation ducts ■ Measurement of the total pressure and the static pressure of the air flow in accordance with the pitot tube principle |
| Wall mounting, easy installation | Wall mounting, easy installation | Wall mounting, easy installation | <ul style="list-style-type: none"> ■ 2 x screw holes with Ø 5.0 mm ■ Sizes ≥ 350 mm have a Ø 6.0 mm bolt, washer and nut attached to the other end of the measuring probe to stabilise the measuring probe |
| Connecting nozzle for hoses with inner diameter 4 mm | Connecting nozzle, side mount, for hoses with inner diameter 4 or 6 mm | Connecting nozzle, lower mount, for hoses with inner 4 mm diameter | <ul style="list-style-type: none"> ■ 4.8 mm brass with barbs for pipes with inner diameter 4 mm ■ Ideal in combination with A2G-520 (differential pressure air flow sensor) or A2G-540 (differential pressure and air flow controller) |
| | Switching power: AC 250 V, 3 A DC 30 V, 3 A Single pole double throw | Modbus® RTU | |
| <ul style="list-style-type: none"> ■ Easy-to-read analogue display ■ Reservoir for absorbing the volume expansion of the measuring liquid in case of a strong heating of the measuring liquid (e.g. when exposed to strong radiation from sunlight). ■ Easy zero point correction | <ul style="list-style-type: none"> ■ Very reliable ■ Simple setting of the switch point ■ Robust case and functional design | <ul style="list-style-type: none"> ■ Two differential pressure sensors in one instrument ■ Two inputs for temperature sensors or analogue 0 ... 10 V signal ■ Two-line LC display for the direct reading of both pressure values | <ul style="list-style-type: none"> ■ Multipoint averaging on the basis of the "Log-Tchebycheff" method to ensure an increased accuracy ■ Bevelled sensor points guarantee uniform measured values ■ Available for circular ventilation pipes (version R) and for rectangular ventilation ducts (version L) ■ Measurement even at very low air velocities of down to 1.0 m/s |
| 0 ... 600 Pa | 20 ... 200 Pa to 500 ... 4,500 Pa | <ul style="list-style-type: none"> ■ -250 ... +2,500 Pa ■ -250 ... +7,500 Pa | <ul style="list-style-type: none"> ■ For circular ventilation pipes up to Ø 1,500 mm ■ For rectangular ventilation ducts up to 1,500 mm duct depth |
| IP54 | IP54 | IP54 | - |

Pressure



| | Differential pressure sensor | Differential pressure air flow sensor | Differential pressure and air flow controller |
|---------------------------------|--|---|--|
| Model | A2G-500 | A2G-520 | A2G-540 |
| Application | <ul style="list-style-type: none"> ■ Measurement of differential pressure, gauge pressure and vacuum ■ Monitoring of filters and ventilators ■ Pressure monitoring in ventilation ducts, laboratories, production areas and clean rooms | <ul style="list-style-type: none"> ■ Measurement and monitoring of ventilator air flow ■ Measurement and monitoring of air flow in ventilation pipes and ventilation ducts in conjunction with the A2G-FM measuring probe | <ul style="list-style-type: none"> ■ Infinitely variable control of EC ventilators ■ Control of frequency converters ■ Control of supply air and extract air systems with constant or variable air flows |
| Mounting | Screw the removable mounting plate directly to the air-handling system or mount it on a DIN rail in the control cabinet | Screw the removable mounting plate directly to the air-handling system or mount it on a DIN rail in the control cabinet | Screw the removable mounting plate directly to the air-handling system or mount it on a DIN rail in the control cabinet |
| Process connection | Connecting nozzle, lower mount, for hoses with 4 ... 6 mm inner diameter | Connecting nozzle, lower mount, for hoses with 4 ... 6 mm inner diameter | Connecting nozzle, lower mount, for hoses with 4 ... 6 mm inner diameter |
| Electrical input signal | <ul style="list-style-type: none"> ■ 2 x voltage input (DC 0 ... 10 V, 0 ... 5 V or 2 ... 10 V) ■ 2 x resistance input (Pt1000, Ni1000, Ni1000-LG, NTC10k) | <ul style="list-style-type: none"> ■ 2 x voltage input (DC 0...10 V, 0 ... 5 V or 2 ... 10 V) ■ 2 x resistance input (Pt1000, Ni1000, Ni1000-LG, NTC10k) | <ul style="list-style-type: none"> ■ 2 x voltage input (DC 0 ... 10 V, 0 ... 5 V or 2 ... 10 V) ■ 2 x resistance input (Pt1000, Ni1000, Ni1000-LG, NTC10k) |
| Electrical output signal | <ul style="list-style-type: none"> ■ 4 ... 20 mA ■ 0 ... 5 V, 0 ... 10 V, 2 ... 10 V ■ Modbus® RTU ■ LoRaWAN® ■ 1 - 2 relay outputs (max. 5 A / DC 24 V) | <ul style="list-style-type: none"> ■ 4 ... 20 mA ■ 0 ... 5 V, 0 ... 10 V, 2 ... 10 V ■ Modbus® RTU ■ LoRaWAN® ■ 1 - 2 relay outputs (max. 5 A / DC 24 V) | <ul style="list-style-type: none"> ■ 4 ... 20 mA ■ 0 ... 5 V, 0 ... 10 V, 2 ... 10 V ■ Modbus® RTU ■ LoRaWAN® ■ 1 - 2 relay outputs (max. 5 A / DC 24 V) |
| Special features | <ul style="list-style-type: none"> ■ IIoT-ready and future-proof thanks to analogue and digital signal transmission, as well as via radio ■ Time-saving instrument configuration and display of current measured values on the smartphone via WIKA app ■ No cabling effort for retrofit project thanks to battery operation and LoRaWAN® ■ Decentralised data node – up to four input signals – reduces cabling effort and installation costs ■ Traffic light function enables critical system states to be identified at a glance ■ 2" TFT colour display ■ Automatic zero point setting | <ul style="list-style-type: none"> ■ IIoT-ready and future-proof thanks to analogue and digital signal transmission, as well as via radio ■ Time-saving instrument configuration and display of current measured values on the smartphone via WIKA app ■ Decentralised data node – up to four input signals – reduces cabling effort and installation costs ■ Traffic light function enables critical system states to be identified at a glance ■ 2" TFT colour display ■ Automatic zero point setting ■ Integrated air flow calculation based on all common formulae | <ul style="list-style-type: none"> ■ IIoT-ready and future-proof thanks to analogue and digital signal transmission, as well as via radio ■ Time-saving instrument configuration and display of current measured values on the smartphone via WIKA app ■ Decentralised data node – up to four input signals – reduces cabling effort and installation costs ■ Traffic light function enables critical system states to be identified at a glance ■ 2" TFT colour display ■ Automatic zero point setting ■ Integrated air flow calculation based on all common formulae ■ PID control functionality |
| Measuring range | <ul style="list-style-type: none"> ■ 0 ... 25 Pa / 0 ... 12,000 Pa ■ -25 ... +25 Pa / -1,000 ... +1,000 Pa | <ul style="list-style-type: none"> ■ 0 ... 25 Pa / 0 ... 7,000 Pa ■ -25 ... +25 Pa / -1,000 ... +1,000 Pa | <ul style="list-style-type: none"> ■ 0 ... 25 Pa / 0 ... 7,000 Pa ■ -25 ... +25 Pa / -1,000 ... +1,000 Pa |
| Ingress protection | IP65 | IP65 | IP65 |

Humidity and air quality



| | Ventilation duct sensor for relative humidity and temperature | Ventilation duct sensor for air quality, VOC | Ventilation duct sensor for CO ₂ and temperature | Control panels with integrated room sensor |
|---|--|---|--|---|
| Model | A2G-70 | A2G-80 | A2G-85 | A2G-200 |
| Application | For the measurement of relative humidity and temperature in ventilation ducts | For the measurement of volatile organic compounds (VOC) in ventilation ducts to determine room air quality | For the measurement of the CO ₂ content and the temperature in the air duct | For the measurement and display of the temperature, carbon dioxide (CO ₂) and relative humidity in the room |
| Mounting | <ul style="list-style-type: none"> Simple mounting via adjustable mounting flange Screwless cover for quick wiring | Simple mounting via adjustable mounting flange | <ul style="list-style-type: none"> Simple mounting via adjustable mounting flange Screwless cover for quick wiring | Wall mounting |
| Electrical output signal / Switch contacts | <ul style="list-style-type: none"> DC 0/2 ... 5/10 V 4 ... 20 mA Modbus® | DC 0 ... 10 V The greater the output signal of the sensor (0 ... 10 V), the worse the air quality | <ul style="list-style-type: none"> DC 0/2 ... 5/10 V 4 ... 20 mA Modbus® | <ul style="list-style-type: none"> DC 0/2 ... 5/10 V 4 ... 20 mA Modbus® Potential-free SPDT AC 250 V, 6 A / DC 30 V, 6 A with adjustable switch point and hysteresis |
| Measuring element | <ul style="list-style-type: none"> NTC10k temperature sensor Capacitive thermosetting polymer sensor element for humidity | Heated metal oxide semiconductor sensor | <ul style="list-style-type: none"> NTC10k temperature sensor Non-dispersive infrared (NDIR) CO₂ sensor | <ul style="list-style-type: none"> NTC10k temperature sensor Capacitive thermosetting polymer sensor element for humidity Non-dispersive infrared (NDIR) CO₂ sensor |
| Special features | <ul style="list-style-type: none"> Two-line LC display Combined instrument for temperature and humidity (reduced instrument, installation and commissioning costs) | Mixed-gas probes detect gases and vapours which can be oxidised (burned): Body odours, tobacco smoke, extracts from materials (furniture, carpets, paint coatings, adhesives, etc.) | <ul style="list-style-type: none"> Two-line LC display Combined instrument for temperature and CO₂ (reduced instrument, installation and commissioning costs) | <ul style="list-style-type: none"> Touchscreen display On-site configurable relay for each of the three parameters |
| Measuring range | <ul style="list-style-type: none"> Rel. humidity: 0 ... 95 %, non-condensing Temperature: 0 ... 50 °C | | <ul style="list-style-type: none"> CO₂: 400 ... 2,000 ppm Temperature: 0 ... 50 °C | <ul style="list-style-type: none"> CO₂: 400 ... 2,000 ppm Temperature: 0 ... 50 °C Relative humidity: 0 ... 90 % |
| Ingress protection | IP54 | IP20 | IP54 | IP20 |

Temperature



| | Air velocity meter | Duct temperature sensor | Frost protection thermostat | Bimetal thermometer |
|---|--|--|--|--|
| Model | A2G-20 | A2G-60 | A2G-65 | A2G-61 |
| Application | For the measurement of air velocity and temperature in ventilation ducts | For temperature measurement in ventilation ducts and in liquid media, e.g. in pipeline systems | For air-side temperature monitoring and to prevent frost damage to water heating coils | For temperature measurement in ventilation ducts |
| Mounting | Mounting flange for mounting on circular ventilation pipes or rectangular ventilation ducts | <ul style="list-style-type: none"> For direct mounting on circular ventilation pipes or rectangular ventilation ducts with mounting clip With additional thermowell for liquid media | Wall mounting Mounting clamps for capillaries included in delivery | <ul style="list-style-type: none"> NBR sealing for leak-free mounting Mounting template |
| Electrical output signal / Switch contacts | <ul style="list-style-type: none"> Air velocity 0 ... 10 V or 4 ... 20 mA Temperature 0 ... 10 V or 4 ... 20 mA Potential-free, change-over contact, max. AC 250 V, 6 A, DC 30 V, 6 A, adjustable switching threshold and hysteresis | Available in 2-, 3- or 4-wire connection <ul style="list-style-type: none"> Output signal 0 ... 5 V / 0 ... 10 V or 4 ... 20 mA | Change-over contact, max. AC 250 V, max 10 A | |
| Measuring element | <ul style="list-style-type: none"> Temperature: NTC10k Air velocity: Pt1000 | Pt1000 or Ni1000 | Copper capillary tube, filling with R 507 | Bimetal coil |
| Special features | <ul style="list-style-type: none"> Electrical output signal 0 ... 10 V or 4 ... 20 mA directly adjustable at the instrument via jumpers Output signal for velocity and air temperature in one instrument With switching output (optional) Maintenance-free | <ul style="list-style-type: none"> Compact and robust design Insertion length: 50 ... 450 mm Thermowell available in brass or stainless steel | <ul style="list-style-type: none"> Automatic reset (optional: manual reset) Small switch differential Capillary tube length 1.8, 3, 6 or 12 m | <ul style="list-style-type: none"> Insertion length 100, 160, 200, 300 mm Nominal size 100 |
| Measuring range | Air velocity: 0 ... 2 m/s, 0 ... 10 m/s and 0 ... 20 m/s (adjustable at the instrument via jumpers) Temperature: 0 ... 50 °C | -50 ... + 160 °C | Setting range for set point -10 ... +12 °C (factory setting 5 °C) | Scale range -20 ... +60 °C |
| Ingress protection | IP54 | IP65 | IP65 | |



| Duct temperature probe | Outdoor thermometer | Insertion thermometer | Insertion thermometer with connection lead |
|---|---|--|---|
| TF40 | TF41 | TF43 | TF45 |
| For monitoring the temperature in ventilation systems | Measurement of the external temperature (ambient) | Temperature measurement of gaseous and liquid media | Temperature measurement of gaseous or liquid media |
| <ul style="list-style-type: none"> ■ For direct mounting to circular ventilation pipes or square ventilation ducts with mounting flange ■ With additional thermowell for liquid media | <ul style="list-style-type: none"> ■ Mounting with screws on the outside of buildings ■ Optional: Clip-on sun protector | <p>For mechanical stabilisation and fixing, the thermometer can be delivered with an additional probe sleeve made of stainless steel (probe sleeve Ø 6 mm, length: 50 or 100 mm)</p> | <ul style="list-style-type: none"> ■ Direct installation possible for gaseous media ■ With additional thermowell for liquid media |
| 2-wire connection | 2-wire connection | 2-wire connection | 2- or 4-wire connection |
| NTC, Pt100, Pt1000 | NTC, Pt100, Pt1000 | NTC, Pt100, Pt1000 | NTC, Pt100, Pt1000 |
| <ul style="list-style-type: none"> ■ Smallest case design ■ Simple, fast mounting ■ Nominal lengths: 100, 150, 200, 250 mm ■ Material: Stainless steel 1.4571 ■ Diameter: 6 mm | <ul style="list-style-type: none"> ■ Smallest case design ■ UV-resistant | <p>Fitting with customer-specific plug connectors possible</p> | <ul style="list-style-type: none"> ■ Connection lead from PVC, silicone, PTFE ■ Probe sleeve from stainless steel |
| <ul style="list-style-type: none"> ■ -30 ... +130 °C (NTC) ■ -50 ... +200 °C (Pt100 and Pt1000) | <ul style="list-style-type: none"> ■ -30 ... +100 °C (NTC) ■ -40 ... +100 °C (Pt100, Pt1000) | -50 ... +105 °C | -50 ... +260 °C |
| IP65 | IP65 | IP68 | IP65 ... IP67 |

WIKA worldwide

Europe

Austria

WIKA Messgerätevertrieb
Ursula Wiegand GmbH & Co. KG
Tel. +43 1 8691631
info@wika.at / www.wika.at

Benelux

WIKA Benelux
Tel. +31 475 535500
info@wika.nl / www.wika.nl

Bulgaria

WIKA Bulgaria EOOD
Tel. +359 2 82138-10
info@wika.bg / www.wika.bg

Croatia

WIKA Croatia d.o.o.
Tel. +385 1 6531-034
info@wika.hr / www.wika.hr

Denmark

WIKA Danmark A/S
Tel. +45 4581 9600
info@wika.as / www.wika.as

Finland

WIKA Finland Oy
Tel. +358 9 682492-0
info@wika.fi / www.wika.fi

France

WIKA Instruments s.a.r.l.
Tel. +33 1 71 68 10 00
info@wika.fr / www.wika.fr

Germany

WIKA Alexander Wiegand SE & Co. KG
Tel. +49 9372 132-0
info@wika.de / www.wika.de

Ireland

WIKA Instruments Ireland Limited
Tel. +35 386 1449 360
info@wika.ie / www.wika.co.uk

Italy

WIKA Italia S.r.l. & C. S.a.s.
Tel. +39 02 93861-1
info@wika.it / www.wika.it

Poland

WIKA Polska spółka z ograniczoną
odpowiedzialnością sp. k.
Tel. +48 54 2301 10-0
info@wikapolska.pl
www.wikapolska.pl

Romania

WIKA Instruments Romania S.R.L.
Tel. +40 21 4048327
info@wika.ro / www.wika.ro

Russia

AO "WIKI MERA"
Tel. +7 495-648018-0
info@wika.ru / www.wika.ru

Serbia

WIKI Merna Tehnika d.o.o.
Tel. +381 11 2763722
info@wika.rs / www.wika.rs

Spain

Instrumentos WIKI S.A.U.
Tel. +34 933 9386-30
info@wika.es / www.wika.es

Switzerland

WIKI Schweiz AG
Tel. +41 41 91972-72
info@wika.ch / www.wika.ch

Türkiye

WIKI Instruments
Endüstriyel Ölçüm Cihazları Tic. Ltd. Şti.
Tel. +90 216 41590-66
info@wika.com.tr
www.wika.com.tr

Ukraine

TOV WIKI Prylad
Tel. +38 044 496 83 80
info@wika.ua / www.wika.ua

United Kingdom

WIKI Instruments Ltd
Tel. +44 1737 644-008
info@wika.co.uk / www.wika.co.uk

North America

Canada

WIKI Instruments Ltd.
Tel. +1 780 4637035
info@wika.ca / www.wika.ca

USA

WIKI Instrument, LP
Tel. +1 770 5138200
info@wika.com / www.wika.us

Gayesco-WIKA USA, LP

Tel. +1 713 4750022
info@wikhouston.com
www.wika.us

Mensor Corporation

Tel. +1 512 3964200
sales@mensor.com
www.mensor.com

Latin America

Argentina

WIKI Argentina S.A.
Tel. +54 11 5442 0000
ventas@wika.com.ar
www.wika.com.ar

Brazil

WIKI do Brasil Ind. e Com. Ltda.
Tel. +55 15 3459-9700
vendas@wika.com.br
www.wika.com.br

Chile

WIKI Chile S.p.A.
Tel. +56 9 4279 0308
info@wika.cl / www.wika.cl

Colombia

Instrumentos WIKI Colombia S.A.S.
Tel. +57 601 7021347
info@wika.co / www.wika.co

Mexico

Instrumentos WIKI Mexico S.A. de C.V.
Tel. +52 55 50205300
ventas@wika.com / www.wika.mx

Asia

China

WIKI Instrumentation Suzhou Co., Ltd.
Tel. +86 512 6878 8000
info@wika.cn / www.wika.com.cn

India

WIKI Instruments India Pvt. Ltd.
Tel. +1800-123-101010
info@wika.co.in / www.wika.co.in

Japan

WIKI Japan K. K.
Tel. +81 3 5439-6673
info@wika.co.jp / www.wika.co.jp

Kazakhstan

TOO WIKI Kazakhstan
Tel. +7 727 225 9444
info@wika.kz / www.wika.kz

Korea

WIKI Korea Ltd.
Tel. +82 2 869-0505
info@wika.co.kr / www.wika.co.kr

Malaysia

WIKI Instrumentation (M) Sdn. Bhd.
Tel. +60 3 5590 6666
info@wika.my / www.wika.my

Philippines

WIKI Instruments Philippines Inc.
Tel. +63 2 234-1270
info@wika.ph / www.wika.ph

Singapore

WIKI Instrumentation Pte. Ltd.
Tel. +65 6844 5506
info@wika.sg / www.wika.sg

Taiwan

WIKI Instrumentation Taiwan Ltd.
Tel. +886 3 420 6052
info@wika.tw / www.wika.tw

Thailand

WIKI Instrumentation Corporation
(Thailand) Co., Ltd.
Tel. +66 2 326 6876
info@wika.co.th / www.wika.co.th

Uzbekistan

WIKI Instrumentation FE LLC
Tel. +998 71 205 84 30
info@wika.uz / www.wika.uz

Africa/Middle East

Botswana

WIKI Instruments Botswana (Pty.) Ltd.
Tel. +267 3110013
info@wika.co.bw / wika.co.bw

Egypt

WIKI Near East Ltd.
Tel. +20 2 240 13130
info@wika.com.eg / www.wika.com.eg

Namibia

WIKI Instruments Namibia Pty Ltd.
Tel. +26 4 61238811
info@wika.com.na / www.wika.com.na

Nigeria

WIKI WEST AFRICA LIMITED
Tel. +234 17130019
info@wika.com.ng / www.wika.ng

Saudi Arabia

WIKI Saudi Arabia LLC
Tel. +966 53 555 0874
info@wika.sa / www.wika.sa

South Africa

WIKI Instruments Pty. Ltd.
Tel. +27 11 62100-00
sales@wika.co.za / www.wika.co.za

United Arab Emirates

WIKI Middle East FZE
Tel. +971 4 883-9090
info@wika.ae / www.wika.ae

Australia

Australia

WIKI Australia Pty. Ltd.
Tel. +61 2 88455222
sales@wika.com.au / www.wika.com.au

New Zealand

WIKI Instruments Limited
Tel. +64 9 8479020
info@wika.co.nz / www.wika.co.nz

WIKI Alexander Wiegand SE & Co. KG
Alexander-Wiegand-Straße 30 | 63911 Klingenberg | Germany
Tel. +49 9372 132-0 | info@wika.de | www.wika.de

12999106 01/2024 EN



You can find further
information here!



Smart in sensing

www.wika.com